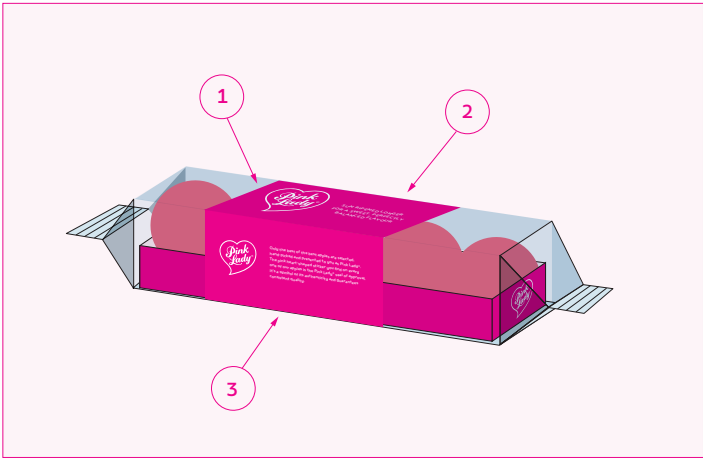
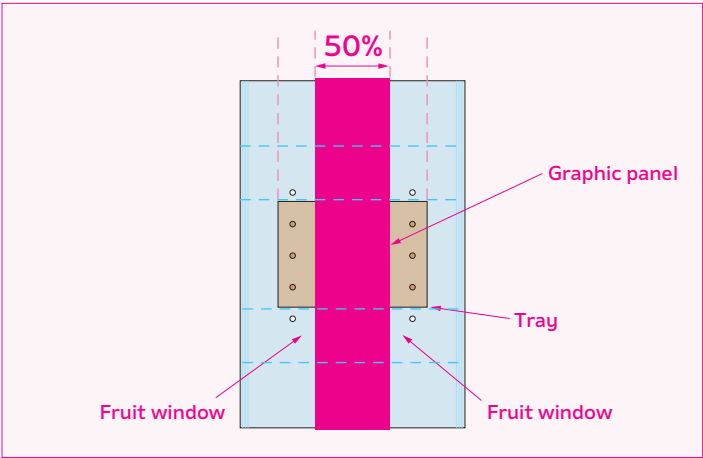


Pink Lady® Packaging Templates  
5 x Apple Inline Tray With Flow Wrap Construction

Facings

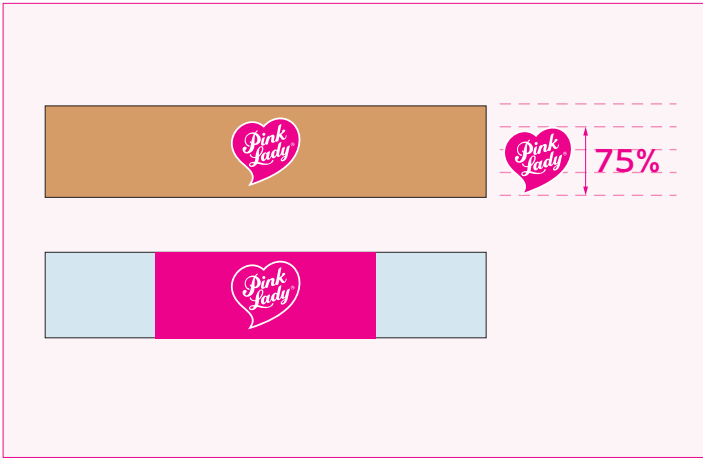


1. Graphic panel



Graphic Panel = 50% of width of the tray.  
Fruit window is kept clear of any printing.

1. Logo size



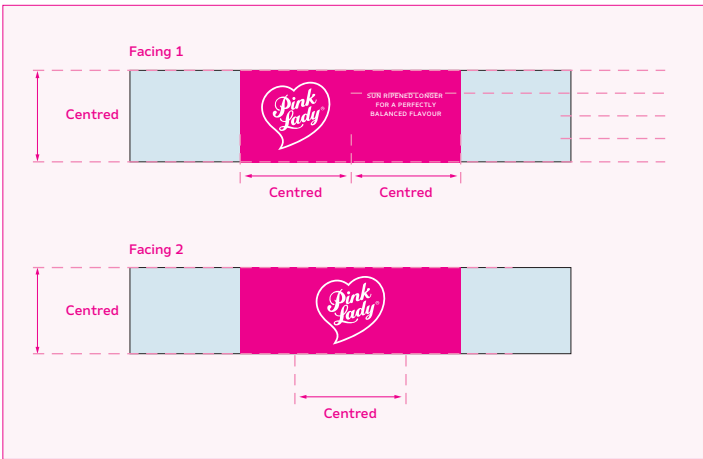
Facing 1 & 2 Logo = 75% height of the tray.

3. Sun-ripened statement



Sun-ripened statement = 8 lines equal to logo height.

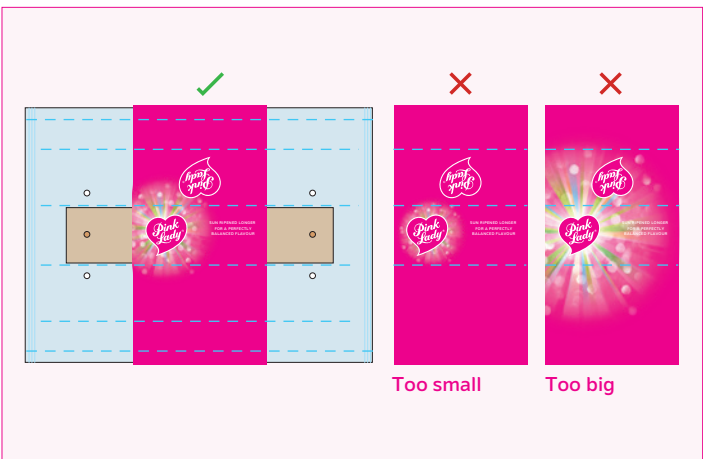
4. Place logo & statement



**Facing 1.** The logo is centred vertically. Use a 4 row grid (to the height of the tray) to align the sun-ripened statement. Use a 2 column grid for horizontal alignment. The logo is centered in the first column, sun ripened in the second.

**Facing 2.** Logo is centred.

5. Size sunshine



Size the sunshine device on facing 1 so that it finishes just on the edge of the sun-ripened statement, without affecting readability.

The sunshine device continues over the edge at the top onto part of facing 2.

Avoid making the sunshine device too large or too small.

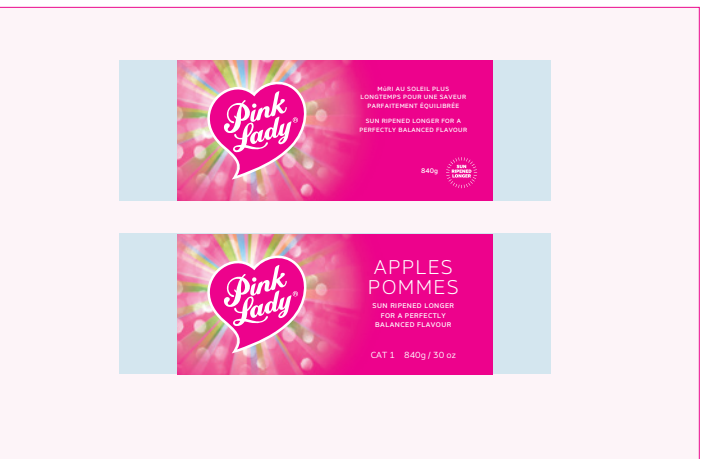
6. Weight/volume/Trust Mark



**Facing 1.** Place weight/volume and Trust Mark in the bottom row. Allow space for margins away from the edge and any breather holes. **Note:** Only use the Secondary Trust Mark when the 'Sun Ripened Longer...' statement appears on the same panel.

**Facing 2.** Place weight/volume and Trust Mark at the bottom with a 5mm margin.

7. Region specific information



Adjust layout to accommodate any regional specific pack information while maintaining the size of the logo.

